

SUPPORTING INFORMATION II

RAINFALL HISTORICAL SERIES 1992-2012 IN THE PAURÁ LAGOON REGION

Table 1 - Accumulated monthly values of rainfall and number of days without rain per month, during 1992-1994, in *Paurá* Lagoon region. Compiled with data from the Tavares Weather Station, Superintendence of Ports and Waterways of Rio Grande do Sul. Empty cells mean unavailable data.

Tabela I - Valores mensais acumulados de precipitação e dias sem precipitação nos respectivos meses, período 1992 e 1994, na região da Lagoa do Paurá. Compilado a partir dos dados registrados pela Estação Meteorológica de Tavares-RS da Superintendência de Portos e Hidrovias do Estado do Rio Grande do Sul. Células vazias significam dados não disponíveis.

Years	Month	Monthly Rainfall (mm)	Rainless Days
1992	January		
	February		
	March		
	April		
	May		
	June		
	July		
	August		
	September	131.6	18
	October	79.6	24
	November	42.0	28
	December	35.9	25
1994	January	27.7	29
	February	166.7	18
	March	64.5	26
	April	122.4	19
	May	79.7	22
	June	59.1	21
	July	189.9	20
	August	59.6	26
	September	46.0	22
	October	214.8	19
	November	113.3	23
	December	69.7	27

Table 2 - Accumulated monthly values of rainfall and number of days without rain per month, during 1995-1996, in Paurá Lagoon region. Compiled with data from the Tavares Weather Station, Superintendence of Ports and Waterways of Rio Grande do Sul.

Tabela 2 - Valores mensais acumulados de precipitação e dias sem precipitação nos respectivos meses, período 1995 e 1996, na região da Lagoa do Paurá. Compilado a partir dos dados registrados pela Estação Meteorológica de Tavares-RS da Superintendência de Portos e Hidrovias do Estado do Rio Grande do Sul.

Years	Month	Monthly Rainfall (mm)	Rainless Days
1995	January	37.2	22
	February	73.2	21
	March	135.1	22
	April	152.1	20
	May	43.0	27
	June	142.1	22
	July	342.7	15
	August	111.6	22
	September	161.0	22
	October	106.3	25
	November	51.2	21
	December	28.6	26
1996	January	105.2	18
	February	85.9	21
	March	133.9	21
	April	84.7	22
	May	0.5	30
	June	144.1	22
	July	23.8	26
	August	105.4	22
	September	109.4	19
	October	221.0	21
	November	58.0	26
	December	42.9	27

Table 3 - Accumulated monthly values of rainfall and number of days without rain per month, during 1997-1998, in Paurá Lagoon region. Compiled with data from the Tavares Weather Station, Superintendence of Ports and Waterways of Rio Grande do Sul.

Tabela 3 - Valores mensais acumulados de precipitação e dias sem precipitação nos respectivos meses, período 1997-1998, na região da Lagoa do Paurá. Compilado a partir dos dados registrados pela Estação Meteorológica de Tavares-RS da Superintendência de Portos e Hidrovias do Estado do Rio Grande do Sul.

Years	Month	Monthly Rainfall (mm)	Rainless Days
1997	January	71.5	27
	February	155.9	21
	March	102.4	24
	April	75.3	24
	May	103.5	25
	June	183.2	21
	July	124.0	26
	August	247.8	22
	September	93.7	24
	October	291.2	20
	November	142.7	22
	December	103.6	24
1998	January	212.7	21
	February	151.9	21
	March	188.7	20
	April	226.4	19
	May	186.3	25
	June	158.3	23
	July	153.4	25
	August	204.7	19
	September	144.3	23
	October	12.5	28
	November	36.4	27
	December	47.2	24

Table 4 - Accumulated monthly values of rainfall and number of days without rain per month, during 1999-2000, in Paurá Lagoon region. Compiled with data from the Tavares Weather Station, Superintendence of Ports and Waterways of Rio Grande do Sul.

Tabela 4 - Valores mensais acumulados de precipitação e dias sem precipitação nos respectivos meses, período 1999-2000, na região da Lagoa do Paurá. Compilado a partir dos dados registrados pela Estação Meteorológica de Tavares-RS da Superintendência de Portos e Hidrovias do Estado do Rio Grande do Sul.

Years	Month	Monthly Rainfall (mm)	Rainless Days
1999	January	75.7	26
	February	71.9	26
	March	40.3	26
	April	175.9	23
	May	141.1	26
	June	75.2	24
	July	103.6	26
	August	60.8	25
	September	111.3	26
	October	90.0	27
	November	108.5	27
	December	122.7	28
2000	January	43.0	28
	February	46.3	25
	March	90.0	23
	April	145.0	24
	May	133.2	25
	June	198.0	23
	July	102.8	28
	August	96.1	26
	September	249.2	25
	October	155.4	24
	November	88.2	26
	December	63.5	26

Table 5 - Accumulated monthly values of rainfall and number of days without rain per month, during 2001-2002, in Paurá Lagoon region. Compiled with data from the Tavares Weather Station, Superintendence of Ports and Waterways of Rio Grande do Sul.

Tabela 5 - Valores mensais acumulados de precipitação e dias sem precipitação nos respectivos meses, período 2001-2002, na região da Lagoa do Paurá. Compilado a partir dos dados registrados pela Estação Meteorológica de Tavares-RS da Superintendência de Portos e Hidrovias do Estado do Rio Grande do Sul.

Years	Month	Monthly Rainfall (mm)	Rainless Days
2001	January	120.8	25
	February	111.3	25
	March	44.4	28
	April	238.9	22
	May	48.6	27
	June	188.3	25
	July	178.5	23
	August	36.8	28
	September	142.9	22
	October	93.4	27
	November	163.1	25
	December	60.4	28
2002	January	84.4	28
	February	74.5	22
	March	191.5	22
	April	140.4	22
	May	121.4	28
	June	172.6	24
	July	174.0	25
	August	139.2	26
	September	156.6	25
	October	163.2	25
	November	52.7	27
	December	266.6	24

Table 6 - Accumulated monthly values of rainfall and number of days without rain per month, during 2003-2004, in Paurá Lagoon region. Compiled with data from the Tavares Weather Station, Superintendence of Ports and Waterways of Rio Grande do Sul.

Tabela 6 - Valores mensais acumulados de precipitação e dias sem precipitação nos respectivos meses, período 2003-2004, na região da Lagoa do Paurá. Compilado a partir dos dados registrados pela Estação Meteorológica de Tavares-RS da Superintendência de Portos e Hidrovias do Estado do Rio Grande do Sul.

Years	Month	Monthly Rainfall (mm)	Rainless Days
2003	January	28.9	30
	February	221.0	19
	March	98.8	26
	April	61.2	26
	May	44.6	29
	June	156.5	25
	July	180.0	25
	August	55.2	30
	September	69.9	27
	October	117.0	28
	November	51.8	26
	December	156.6	25
2004	January	65.2	28
	February	31.1	27
	March	51.3	28
	April	90.8	26
	May	257.4	26
	June	113.4	26
	July	122.8	28
	August	79.4	28
	September	162.6	26
	October	39.6	28
	November	49.3	27
	December	112.8	28

Table 7 - Accumulated monthly values of rainfall and number of days without rain per month, during 2005-2006, in Paurá Lagoon region. Compiled with data from the Tavares Weather Station, Superintendence of Ports and Waterways of Rio Grande do Sul. Empty cells mean unavailable data.

Tabela 7 - Valores mensais acumulados de precipitação e dias sem precipitação nos respectivos meses, período 2005-2006, na região da Lagoa do Paurá. Compilado a partir dos dados registrados pela Estação Meteorológica de Tavares-RS da Superintendência de Portos e Hidrovias do Estado do Rio Grande do Sul. Células vazias significam dados não disponíveis.

Years	Month	Monthly Rainfall (mm)	Rainless Days
2005	January	7.2	30
	February	40.4	24
	March	46.2	29
	April	78.1	25
	May	126.3	26
	June	13.3	27
	July	50.6	28
	August	86.5	24
	September	245.8	22
	October	136.5	24
	November	11.3	29
	December	30.5	28
2006	January	133.1	26
	February	57.3	25
	March	55.7	28
	April	33.1	28
	May	96.8	25
	June		
	July		
	August		
	September	181.6	24
	October	30.0	27
	November	157.0	26
	December	112.7	25

Table 8- Accumulated monthly values of rainfall and number of days without rain per month, during 2007-2008, in Paurá Lagoon region. Compiled with data from the Tavares Weather Station, Superintendence of Ports and Waterways of Rio Grande do Sul. Empty cells mean unavailable data.

Tabela 8 - Valores mensais acumulados de precipitação e dias sem precipitação nos respectivos meses, período 2007-2008, na região da Lagoa do Paurá. Compilado a partir dos dados registrados pela Estação Meteorológica de Tavares-RS da Superintendência de Portos e Hidrovias do Estado do Rio Grande do Sul. Células vazias significam dados não disponíveis.

Years	Month	Monthly Rainfall (mm)	Rainless Days
2007	January	70.3	26
	February	112.8	22
	March	260.7	25
	April	149.2	27
	May	100.6	26
	June	276.6	20
	July	166.0	25
	August	259.1	21
	September		
	October		
	November		
	December	4.5	30
2008	January	29.5	27
	February	68.1	26
	March	60.3	29
	April	74.2	21
	May	268.4	23
	June	54.6	26
	July	102.5	23
	August	141.1	24
	September	130.0	25
	October	68.4	26
	November	43.6	27
	December	18.2	29

Table 9 - Accumulated monthly values of rainfall and number of days without rain per month, during 2009-2010, in Paurá Lagoon region. Compiled with data from the Tavares Weather Station, Superintendence of Ports and Waterways of Rio Grande do Sul. Empty cells mean unavailable data.

Tabela 9 - Valores mensais acumulados de precipitação e dias sem precipitação nos respectivos meses, período 2009-2010, na região da Lagoa do Paurá. Compilado a partir dos dados registrados pela Estação Meteorológica de Tavares-RS da Superintendência de Portos e Hidrovias do Estado do Rio Grande do Sul. Células vazias significam dados não disponíveis.

Years	Month	Monthly Rainfall (mm)	Rainless Days
2009	January	95.3	21
	February	98.5	23
	March	55.5	24
	April	3.7	29
	May	102.4	25
	June	70.1	25
	July	71.9	28
	August	184.5	23
	September		
	October	70.0	26
	November	238.7	22
	December		
2010	January		
	February		
	March	18.3	28
	April		
	May	164.6	26
	June	124.1	27
	July	197.8	25
	August		
	September	158.3	24
	October	14.8	30
	November	58.4	28
	December	46.8	26

Table 10 - Accumulated monthly values of rainfall and number of days without rain per month, during 2011-2012, in Paurá Lagoon region. Compiled with data from the Tavares Weather Station, Superintendence of Ports and Waterways of Rio Grande do Sul.

Tabela 10 - Valores mensais acumulados de precipitação e dias sem precipitação nos respectivos meses, período 2011-2012, na região da Lagoa do Paurá. Compilado a partir dos dados registrados pela Estação Meteorológica de Tavares-RS da Superintendência de Portos e Hidrovias do Estado do Rio Grande do Sul.

Years	Month	Monthly Rainfall (mm)	Rainless Days
2011	January	99.0	28
	February	97.4	24
	March	46.4	27
	April	100.6	25
	May	67.5	28
	June	120.9	24
	July	69.2	26
	August	227.5	25
	September	76.5	26
	October	168.3	22
	November	32.8	28
	December	135.2	26
2012	January	37.6	27
	February	47.2	26
	March	53.4	28
	April	39.5	26
	May	34.1	29
	June	63.7	28
	July	128.6	29
	August	115.4	23
	September	192.3	21
	October	60.0	25
	November	24.7	27
	December	230.2	26

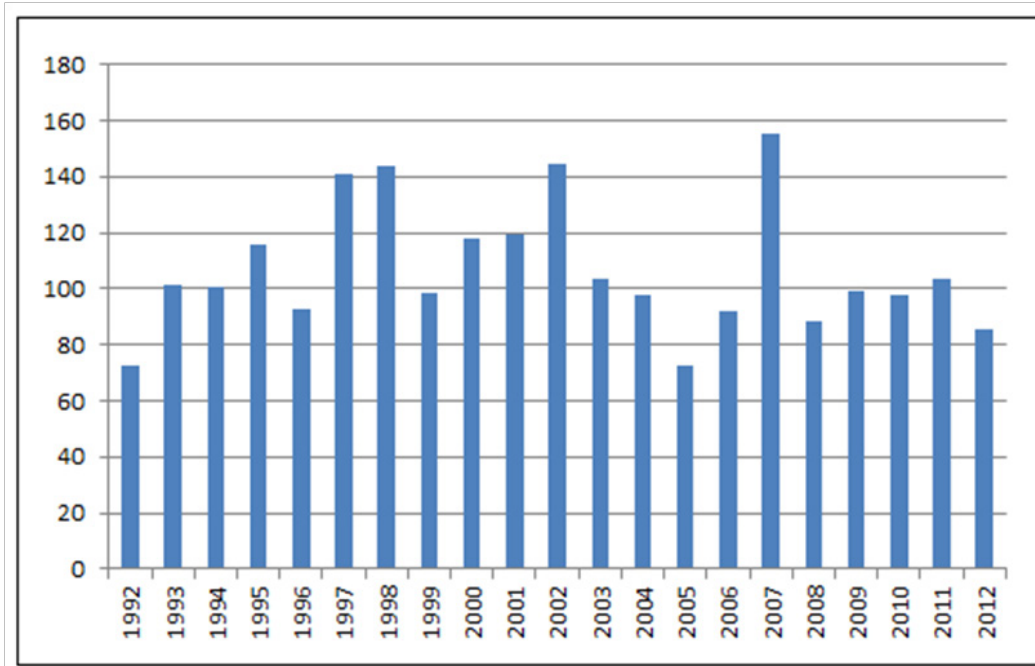


Figure 1 - Average monthly values of accumulated rain by year during the series 1992-2012, in the Paurá Lagoon region, calculations based on data from the Tavares Weather Station, Superintendence of Ports and Waterways of Rio Grande do Sul.

Figura 1 - Valor médio mensal de precipitação acumulada, por ano da série histórica 1992 a 2012, calculado com base nos dados da Estação Meteorológica de Tavares, da Superintendência de Portos e Hidrovias do Rio Grande do Sul.

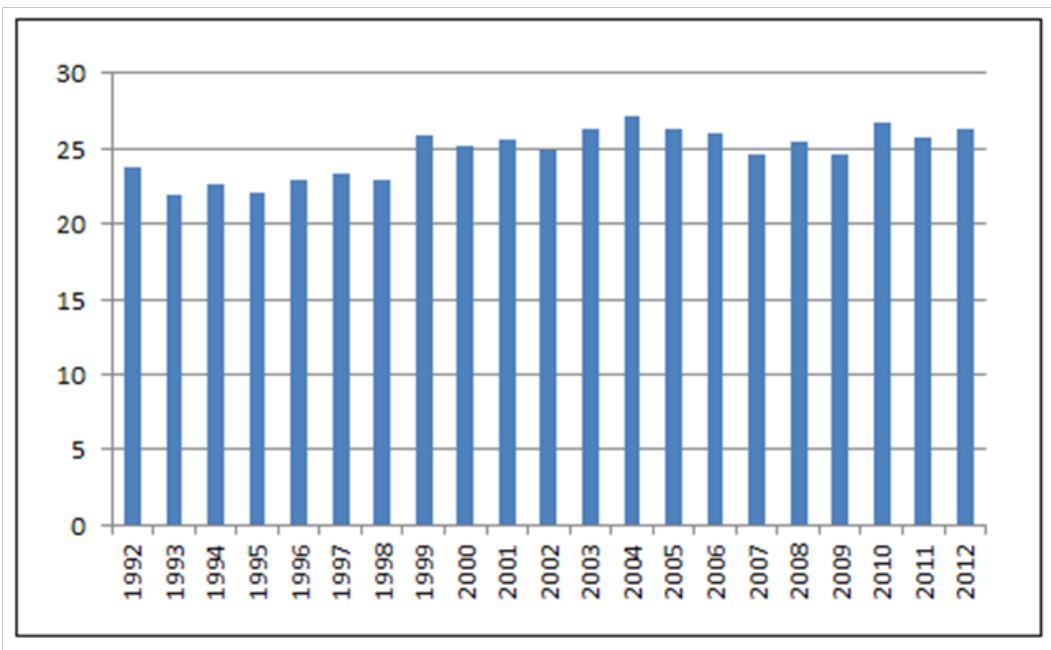


Figure 2 - Average monthly number of days without rain per year in the 1992-2012 historical series, in the region of Paurá Lagoon, calculated based on data from the Tavares Weather Station, the Superintendence of Ports and Waterways of Rio Grande do Sul.

Figura 2 - Número médio mensal de dias sem chuva, por ano da série histórica de 1992 a 2012, na região da Lagoa do Paurá, calculado com base nos dados da Estação Meteorológica de Tavares, da Superintendência de Portos e Hidrovias do Rio Grande do Sul.